

# 527<sup>TH</sup> AGGRESSOR SQUADRON

## Operation Dragon Attack

### Aircrew Briefing



CONFIDENTIAL // CONFIDENTIAL // CONFIDENTIAL // CONFIDENTIAL

# // SITREP

"March 2024

The latest news coming out of Hong Kong and Taiwan are not good. Apparently several violent riots have taken place, supported by pro-Chinese armed militants. Hong Kong is now in the hands of the Chinese Army and under martial law, to keep the protestors at bay.

In Taiwan though, things are much tougher. The armed militias have started to openly support the Chinese government and with massively growing numbers. We think it's pretty obvious that China is directly aiding these groups and sending their own soldiers to train and fight with them, awaiting the perfect time for an invasion. The Taiwanese Army has placed a travel ban to/from China and for any Chinese national. The Army is in big trouble, there has been constant chatter around the base and most of us believe that at this point the Chinese will strike very soon to seize the opportunity.

I guess we'll have to be ready for war..."



# // ATO

OPER/DRAGONATTACK

MSGID/ATO/USINDOPACOM/31/MAR/2024/1030/

AIRUNITS/32/TACUNITS/6

TIMEFRAM/011600ZAPR2024/TO: 012200ZAPR2024

Chinese forces have swiftly conquered the islands of Saipan and Tinian, under US administration during the night. They used civilian airliners as cargo to ferry an initial assault force consisting of infantry, mechanized units and some advanced SAM systems.

Rota is currently under attack and Chinese forces are sweeping the island before seizing control of its main infrastructure. We cannot let that happen.

Op. Dragon Attack's main objective is to eliminate or severely hamper the enemy ability to prepare a future assault on the remaining Mariana Islands, including Guam. We will strike Rota, Saipan and Tinian and we will neutralize the enemy air defenses, roadblocks and main infiltration routes.

CSG-3 is back in the area and is now reassigned to our AO, while Army and Air Force units on Guam are now activated.

We also have reports of an enemy carrier group approaching from the North and an Amphibious group sailing towards Saipan, allegedly bringing additional troops and defenses.

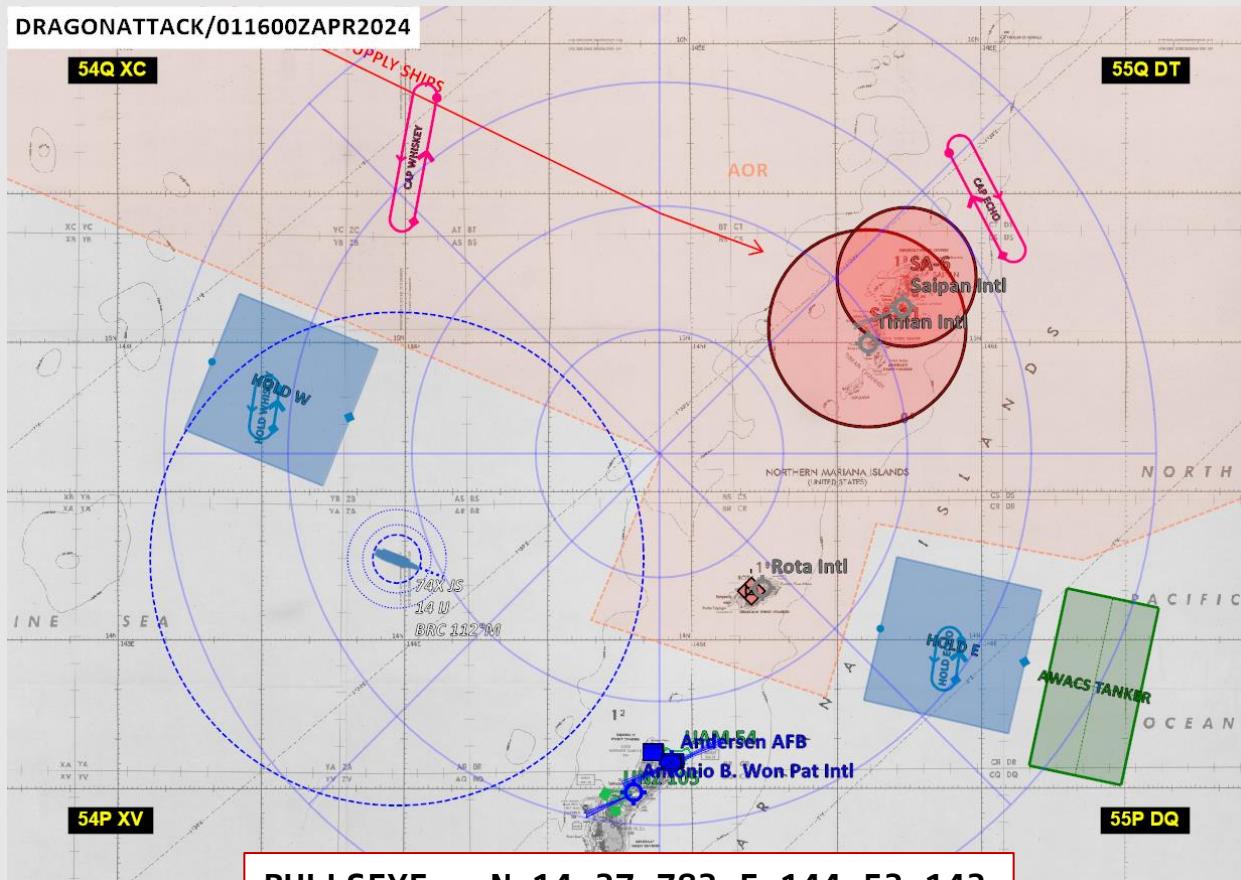
In the next pages, you will find your unit's assignments.

Godspeed

METAR PGUA 311431Z 1107KT 5KM FG NSC 28/20 Q1005 A2969

## // ACO

DRAGONATTACK/011600ZAPR2024



BULLSEYE - N 14 37.783 E 144 53.143

	TYPE	C/S	ROLE	AIRBASE
N A V Y	F/A-18C	Roman 1	TASMO	CVN-74 John C. Stennis
	F/A-18C	Joker 1	SEAD	CVN-74 John C. Stennis
	F-14B	Dragon 1	DCA	CVN-74 John C. Stennis
A I R  F O R C E	F-15E	Beast 1	BAI / DEAD	PGUA
	M-2000C	Beluga 1	OCA RWY	PGUA
	F-16C	Wild 1	SEAD	PGUA
	F-16C	Venom 1	DCA	PGUA
	AH-64D	Gatling 1	CAS	PGUA
	UH-1	Voodoo 1	INFIL	PGUA



# // IMINT



Rota Airport and island roadblocks



# // IMINT



SA-6 (below) and SA-11 (above) sites

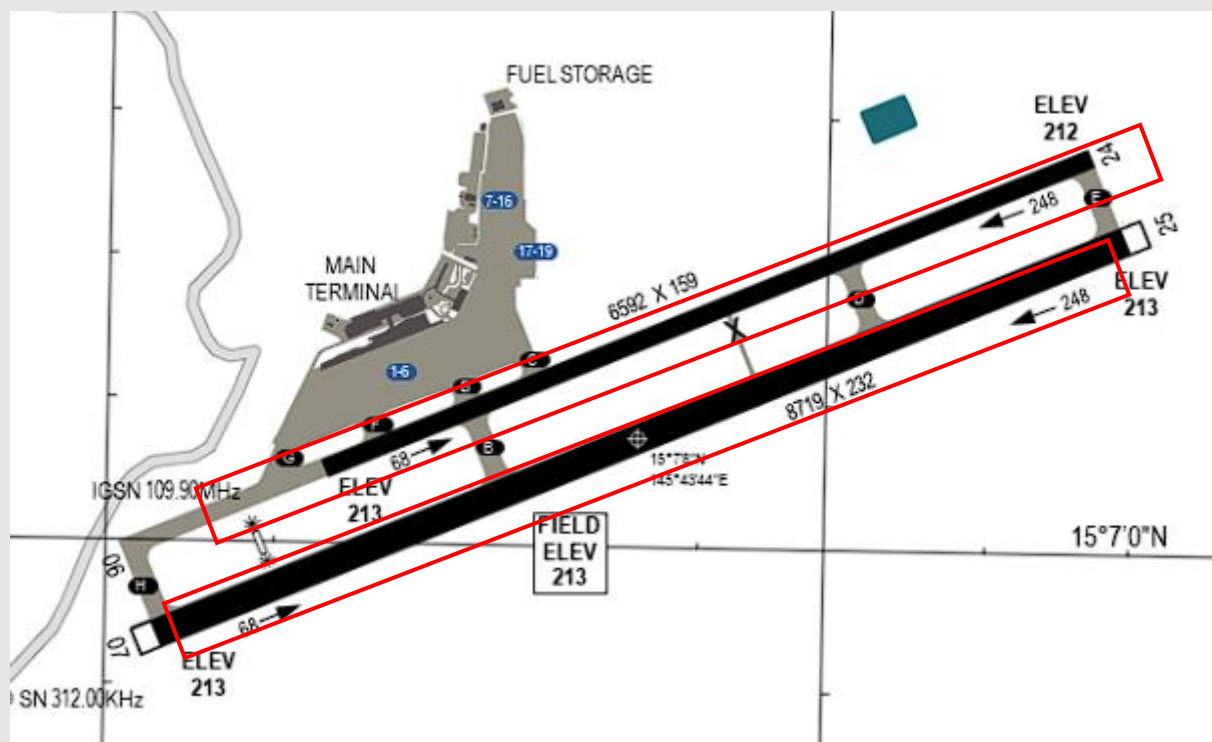




## // IMINT



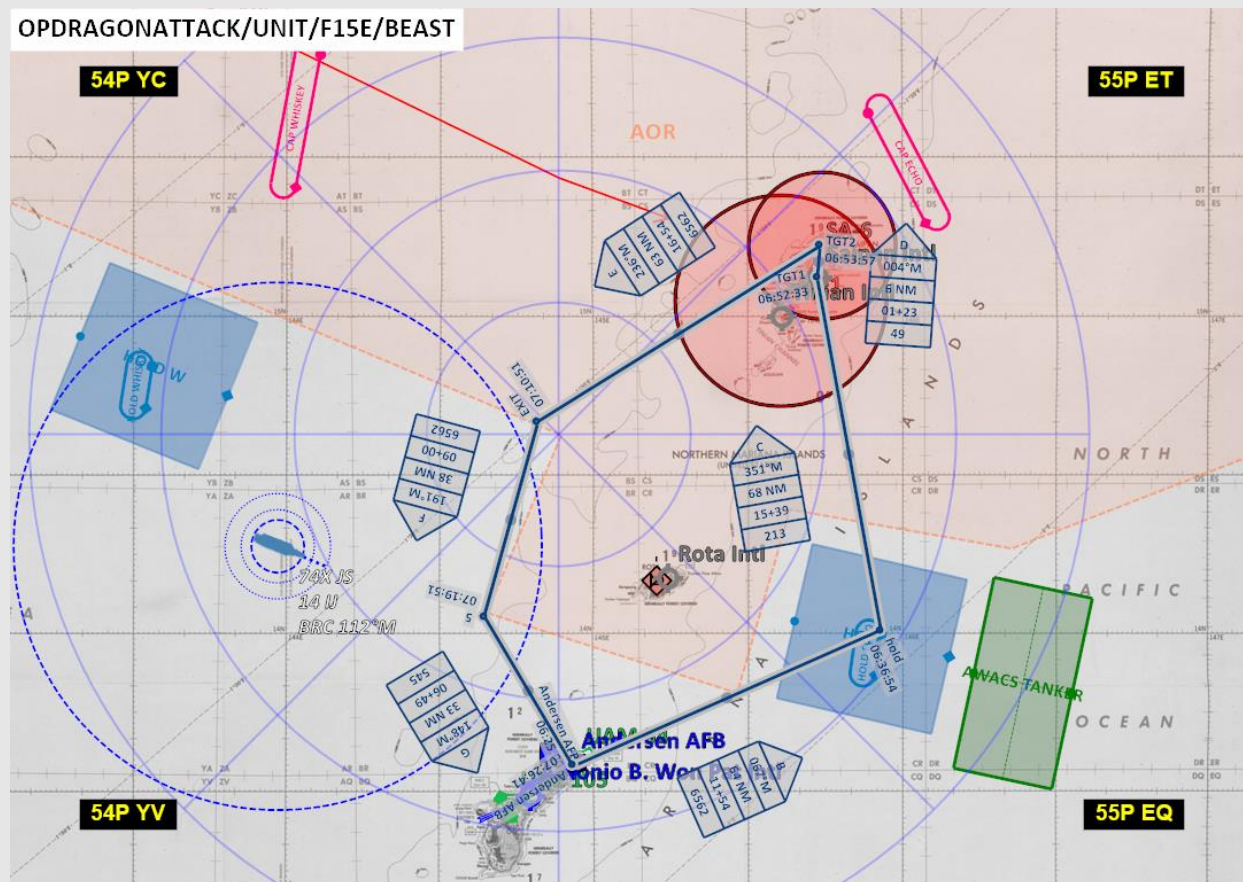
Saipan Airport defenses and 2 runways



## // BRIEF - BEAST

PRIMARY	Destroy the enemy SHORADs around Saipan Airport and the SA-6 at the port of Puerto Rico.
SECONDARY	/
SPINS	Prioritize the search radar to allow the OCA/RWY to start their attack run. Wait for WILD to suppress the SA-11
TACOM	INTRAFLIGHT: 325,100 / 125,100

OPDRAGONATTACK/UNIT/F15E/BEAST

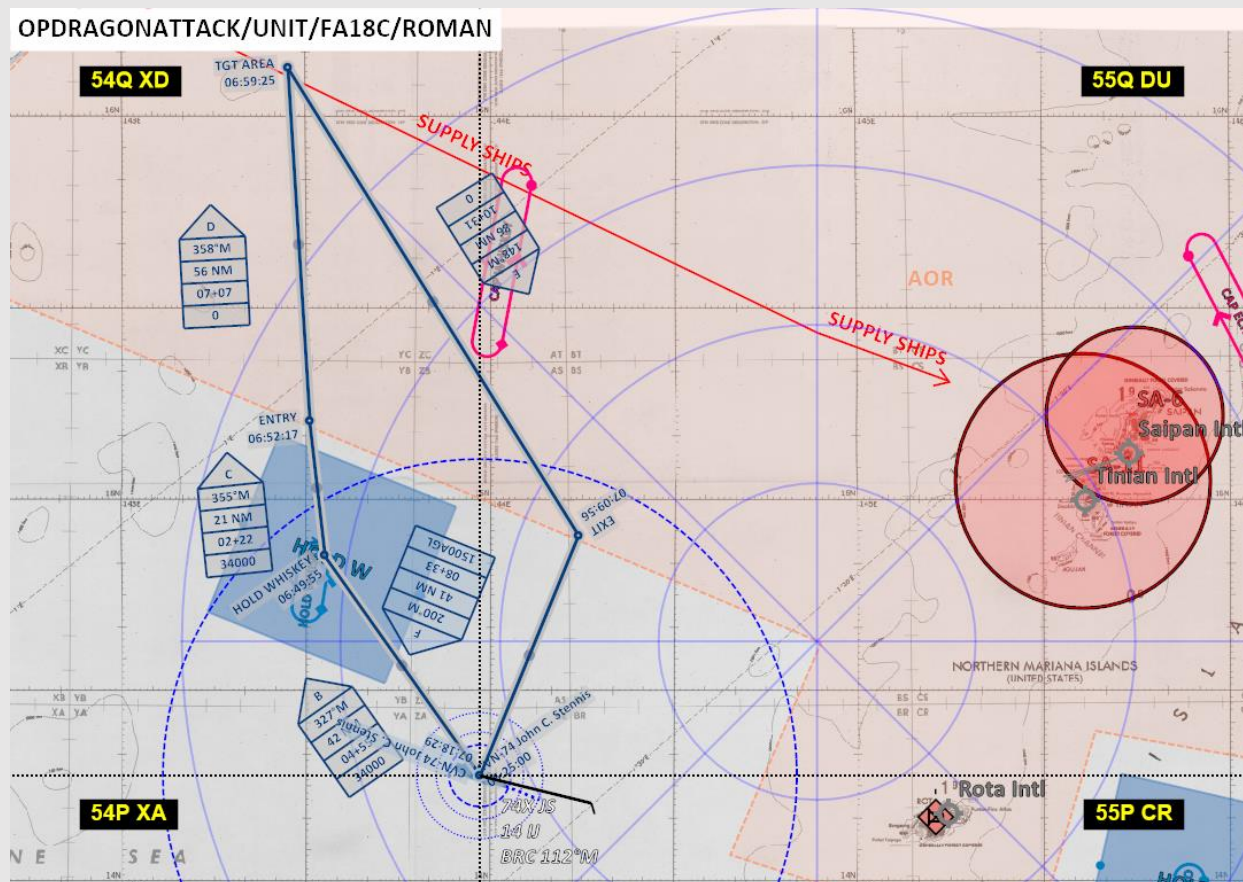




# // BRIEF - ROMAN

PRIMARY	Sink or heavily damage the enemy amphibious group sailing towards Saipan. Beware of civilian ships!
SECONDARY	/
SPINS	Expected threats: Type 52B, Type 071, Supply ship PID enemy ships before opening fire. Civilian merchant ships sailing in the area!
TACOM	INTRAFLIGHT: 325,200 / 125,200

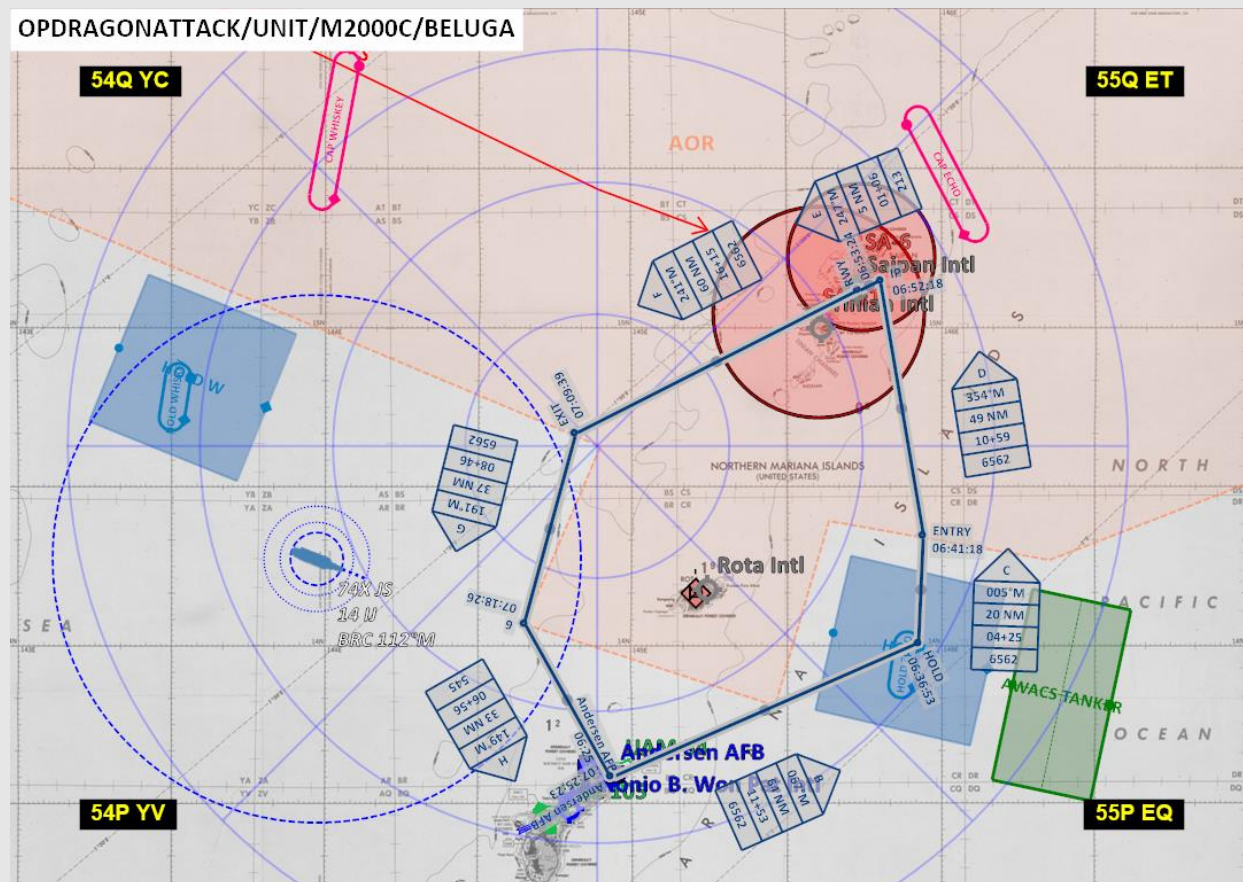
OPDRAGONATTACK/UNIT/FA18C/ROMAN



# // BRIEF - BELUGA

PRIMARY	Destroy the runway and/or the aprons of Saipan Airport
SECONDARY	/
SPINS	Expect SHORAD and SAMs to be destroyed by BEAST and WILD. Attack at own discretion, to be coordinated with TAC C2.
TACOM	INTRAFLIGHT: 325,300 / 125,300

OPDRAGONATTACK/UNIT/M2000C/BELUGA

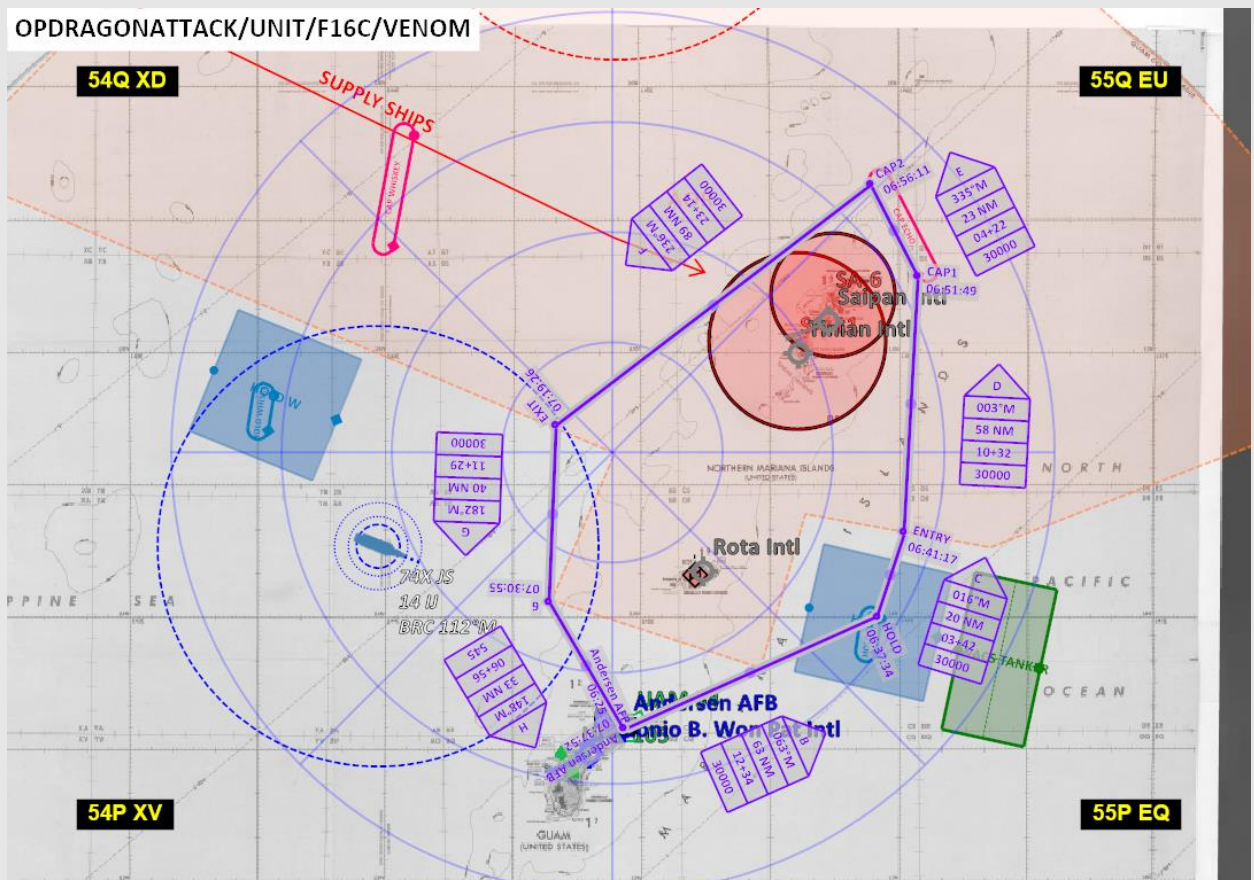


[illegible]



## // BRIEF - VENOM

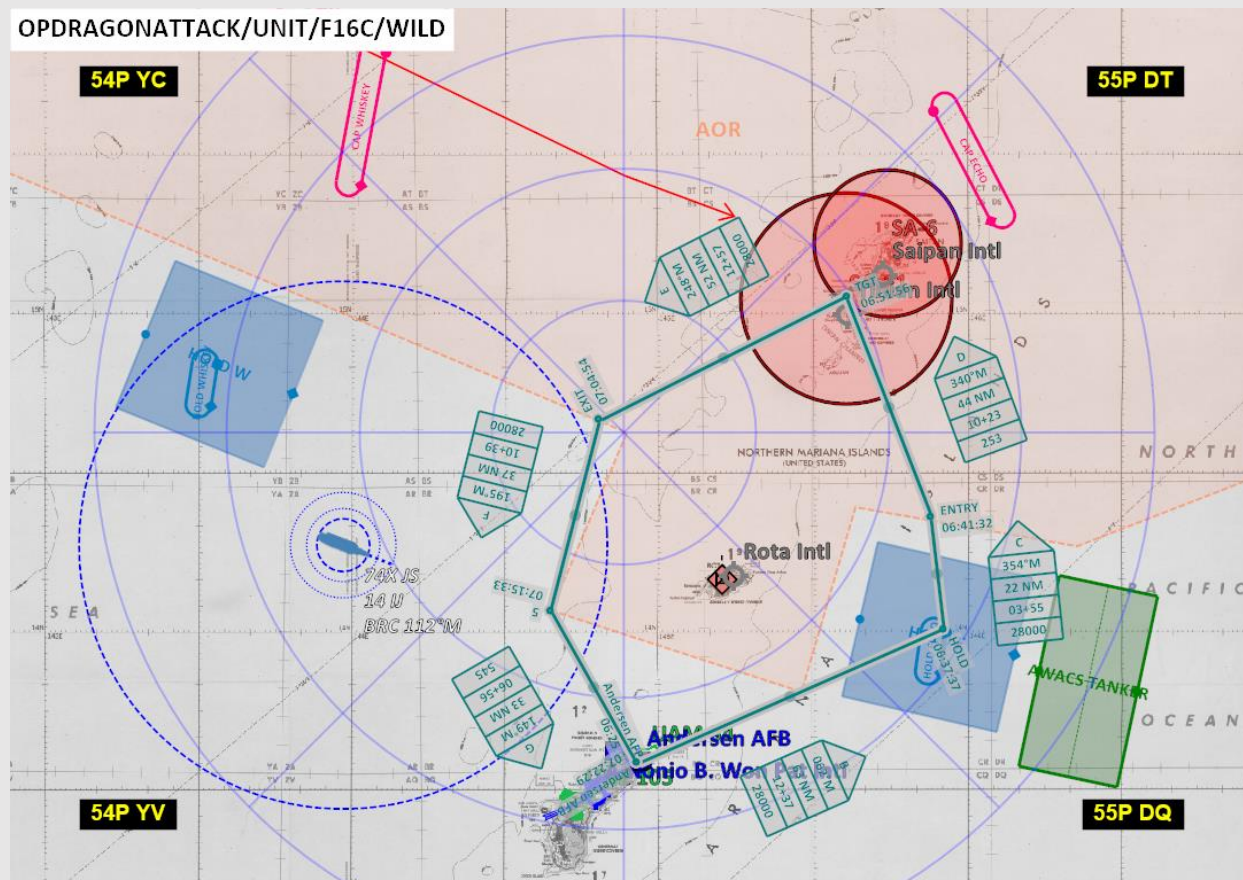
PRIMARY	Intercept any intruder flying southbound in the AO and protect the groups operating over Saipan.
SECONDARY	/
SPINS	Check MSN SPINS for ROE. CAP track 335°M.
TACOM	INTRAFLIGHT: 325,500 / 125,500



## // BRIEF - WILD

PRIMARY	Suppress the SA-11 placed on the island of Saipan
SECONDARY	Destroy the launchers
SPINS	MSN critical for OP success.
TACOM	INTRAFLIGHT: 325,600 / 125,600

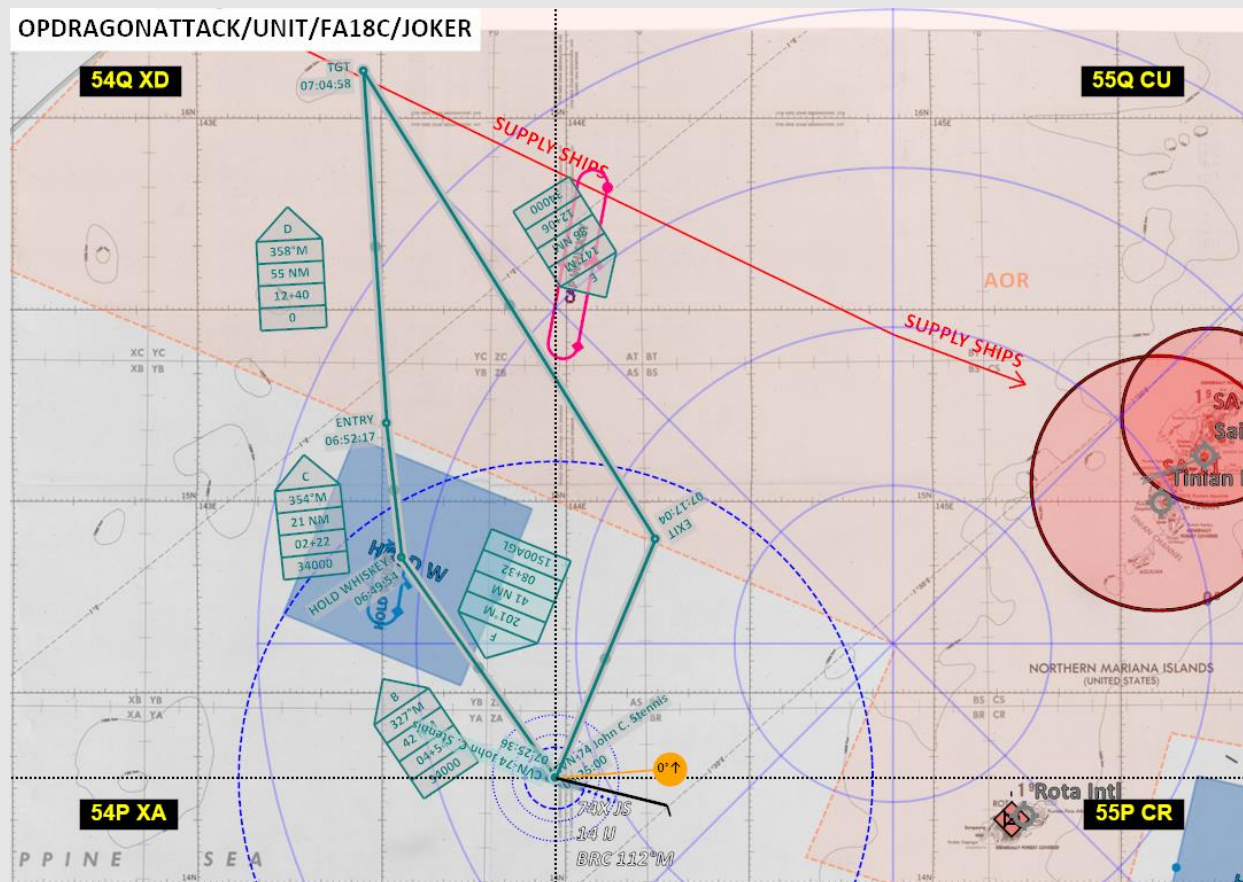
OPDRAGONATTACK/UNIT/F16C/WILD



# // BRIEF - JOKER

PRIMARY	Suppress the enemy amphibious force defense to allow ROMAN's weapons to hit the targets without being intercepted.
SECONDARY	/
SPINS	Coordinate with ROMAN to improve chances of success.
TACOM	INTRAFLIGHT: 325,700 / 125,700

OPDRAGONATTACK/UNIT/FA18C/JOKER





OPDRAGONATTACK/UNIT/AH54D/GATLING

55P AS

55P DS

55P AQ

55P DQ

Rota Intl

Andersen AFB

Antonio B. Won Pat Intl

ENTRY LINE

06:41:33

06:42:53

HOLD E

BS CS DS

BR CR

BO CO

BP DP

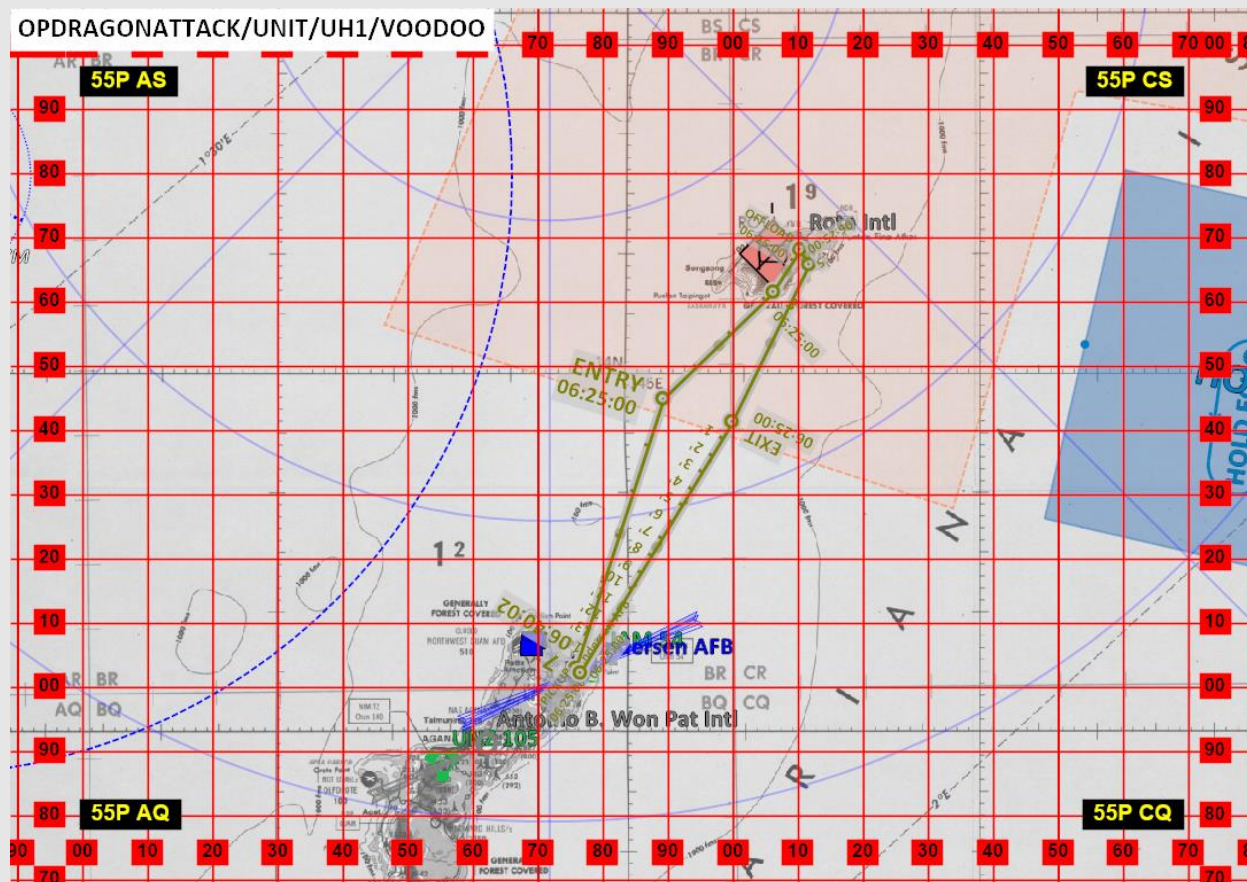
BQ DQ

0 10 20 30 40 50 60 70 80 90

0 10 20 30 40 50 60 70 80 90

# // BRIEF - VOODOO

PRIMARY	Deploy US infantry at Rota Airport
SECONDARY	Support the infantry
SPINS	Coordinate with GATLING for a safe flight plan
TACOM	INTRAFLIGHT: 325,900 / 125,900



# // SPINS

## AOR EAST/USAF

**PRI:** Disable the enemy air defenses and the airport of Saipan.

**SROE:** Weapons free on any PID enemy. WE ARE NOT OFFICIALLY AT WAR WITH CHINA.

## AOR WEST/USN/CSG3

**PRI:** Sink the enemy vessels inside the sovereign area of Guam.

**SROE:** Weapons free on any PID enemy. WE ARE NOT OFFICIALLY AT WAR WITH CHINA.

Beware of civilian vessels transiting through the area!

All CAP groups need to have a PID by TAC C2 units before firing any weapons.

All strike groups are cleared to engage when the appropriate codeword is given.

## DCS SPECIFIC

In use airport frequencies will be specified during the pre-mission briefing. Expect at least TWR and RDR to be in use.

Please remember to add your flight callsign before joining the server to aid our ATC/GCI controllers!

Example: **Gatling 1-1 / {527th} ienatom**



# //TACOM

	AGENCY	CALLSIGN	TAC CH	TACAN	FREQ	TYPE
TAC 2	AA GCI	Falcon Eye	Blue 06	/	275,250	E-2D
	AG GCI	Eagle Eye	Silver 51	/	277,300	E-3A
TANKER	TANKER	Shell 2-1	Orange 33	21Y SH2	301,200	KC-135
	TANKER	Mauler 1-1	White 39	11Y ML1	327,500	S-3B
PGUA	ATIS	Andersen	254,325			ATIS
	Ground		275,800			GND
	Tower		233,700			TWR
	Radar		292,100			RDR
CSG 3	Approach	Courage	ICLS CH. 14	74X JS	304,500	TWR
	LSO	Courage LSO			304,550	LSO

CODEWORDS	ACTION
LUNCH TIME	CLEAR TO PUSH AO
CHOCOLATE	SA-11 NEUTRALIZED
MARMELADE	SA-6 NEUTRALIZED
COFFEE	E BAI COMPLETE
CROISSANT	W TASMO COMPLETE
DINNER TIME	SUCCESS RTB
BRUNCH	ABORT

## //TACOM

	CH	TYPE	FREQ	CALLSIGN
A I R  F O R C E	1	INTRA	/	/
	2	ATIS	254,325	Andersen AB - PGUA
	3	GND	275,800	Andersen GND
	4	TWR	233,700	PGUA TWR
	5	RDR	292,100	PGUA RDR
	6	AA GCI	275,250	Falcon Eye
	7	AG GCI	277,300	Eagle Eye
	8	TKR	301,200	Shell 2-1
	9	ALT	243,000	EMERGENCY

	CH	TYPE	FREQ	CALLSIGN
N A V Y	1	INTRA	/	/
	2	PGUA	233,700	PGUA TWR (ALTERNATE)
	3	LSO	304,550	Courage LSO
	4	CVN	304,500	Courage APP/TWR
	5	RDR	292,100	Andersen RDR
	6	AA GCI	275,250	Falcon Eye
	7	AG GCI	277,300	Eagle Eye
	8	TKR	327,500	Mauler 1-1
	9	ALT	243,000	EMERGENCY

//TACOM

527 <sup>TH</sup> AGGRESSOR SQUADRON									
TACTICAL RADIO CHANNELS									
CODE	NO	FM	VHF	UHF	CODE	NO	FM	VHF	UHF
RED	01			366.500	ORANGE	31		137.250	
RED	02		128.350		ORANGE	32	48.500		
RED	03		124.750		ORANGE	33			301.200
RED	04			345.250	ORANGE	34			296.700
RED	05			299.100	ORANGE	35	45.925		
BLUE	06			275.250	WHITE	36		136.350	
BLUE	07			295.000	WHITE	37	52.900		
BLUE	08			331.500	WHITE	38			237.650
BLUE	09		131.750		WHITE	39			327.500
BLUE	10		132.500		WHITE	40		132.300	
GREEN	11		125.225		BLACK	41		124.450	
GREEN	12		128.750		BLACK	42		135.950	
GREEN	13			288.500	BLACK	43	33.250		
GREEN	14			291.250	BLACK	44			251.550
GREEN	15			333.000	BLACK	45			277.300
YELLOW	16		136.400		BRONZE	46		131.450	
YELLOW	17			226.000	BRONZE	47			299.925
YELLOW	18			231.300	BRONZE	48	53.550		
YELLOW	19			243.950	BRONZE	49	36.625		
YELLOW	20		131.525		BRONZE	50			327.875
PINK	21	47.500			SILVER	51			315.250
PINK	22		136.500		SILVER	52			335.500
PINK	23			347.250	SILVER	53	35.625		
PINK	24		136.950		SILVER	54		135.750	
PINK	25			230.750	SILVER	55			245.500
PURPLE	26		132.975		GOLD	56			316.550
PURPLE	27			344.725	GOLD	57		126.500	
PURPLE	28	34.600			GOLD	58			347.250
PURPLE	29			266.475	GOLD	59			266.125
PURPLE	30		119.175		GOLD	60			318.550
<div> <div>GUARD</div> <div>121.500</div> <div>243.000</div> </div>									
REV. 04									